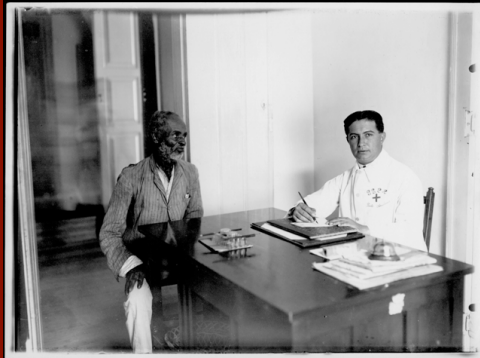


Health and Crises

A historical perspective on health and economic crises in Latin America and the Portuguese-speaking world



Participants

Jeremy Ball, *Dickinson College*
Iris Borowy, *University of Rostock*
Arachu Castro, *Harvard University*
Paul Cruickshank, *Harvard University*
Christina Ewig, *University of Wisconsin – Madison*
Monica Garcia, *Harvard Global Equity Initiative*
Miguel Glatzer, *UMass Dartmouth*
Gilberto Hochman, *Fundação Oswaldo Cruz*
Pedro Ramos Pinto, *Manchester University*
Melissa Teixeira, *Center for History and Economics*
Sunil Amrith, *Birkbeck College, University of London*
Felicia Knaul, *Harvard Global Equity Initiative*
Emma Rothschild, *Harvard University*
Amartya Sen, *Harvard University*
Mary Wilson, *Harvard University*

Tuesday May 4, 2010
The Public Gathering Room
CGIS-South Building, Room S030
1730 Cambridge Street
9.00am-3.00pm

Sponsors

Center for History and Economics
Harvard Global Equity Initiative
DRCLAS-Brazil Studies Program
Mexican Health Foundation
Universidad del Rosario (Colombia)

For more information, please contact Melissa Teixeira, mteixeir@fas.harvard.edu